

PeerLock®

What happens when the same file is opened at two locations being watched by PeerLock?

PeerLock secures a machine's user's files across a network of machines, ensuring that all copies of the files are locked while the user is working with the file. This security protects against multiple revisions occurring simultaneously on different machines.

PeerLock is designed to work with its sister product PeerSync, or with Microsoft DFS-R, to offer a total locking and synchronisation solution in a local or distributed Windows environment.

How It Works

When a user opens a file in a watched folder on the local machine, the file is immediately locked on the other machines (see image 1.1) specified in the user profiles list. Depending upon the PeerLock options specified, PeerLock can either lock files in an exclusive mode or not.

In order for PeerLock to be able to determine when a file has been opened, the application which opens the file must raise a file handle. If it does not, as is the case with notepad, wordpad and paintbrush, Peerlock cannot lock the file. To see which files have raised a handle look in "Computer Management" > "Shared Folders" > "Open Files".

We recommend all users evaluate the product in their specific environment as the performance is strictly based on the applications being used to open the watched files.

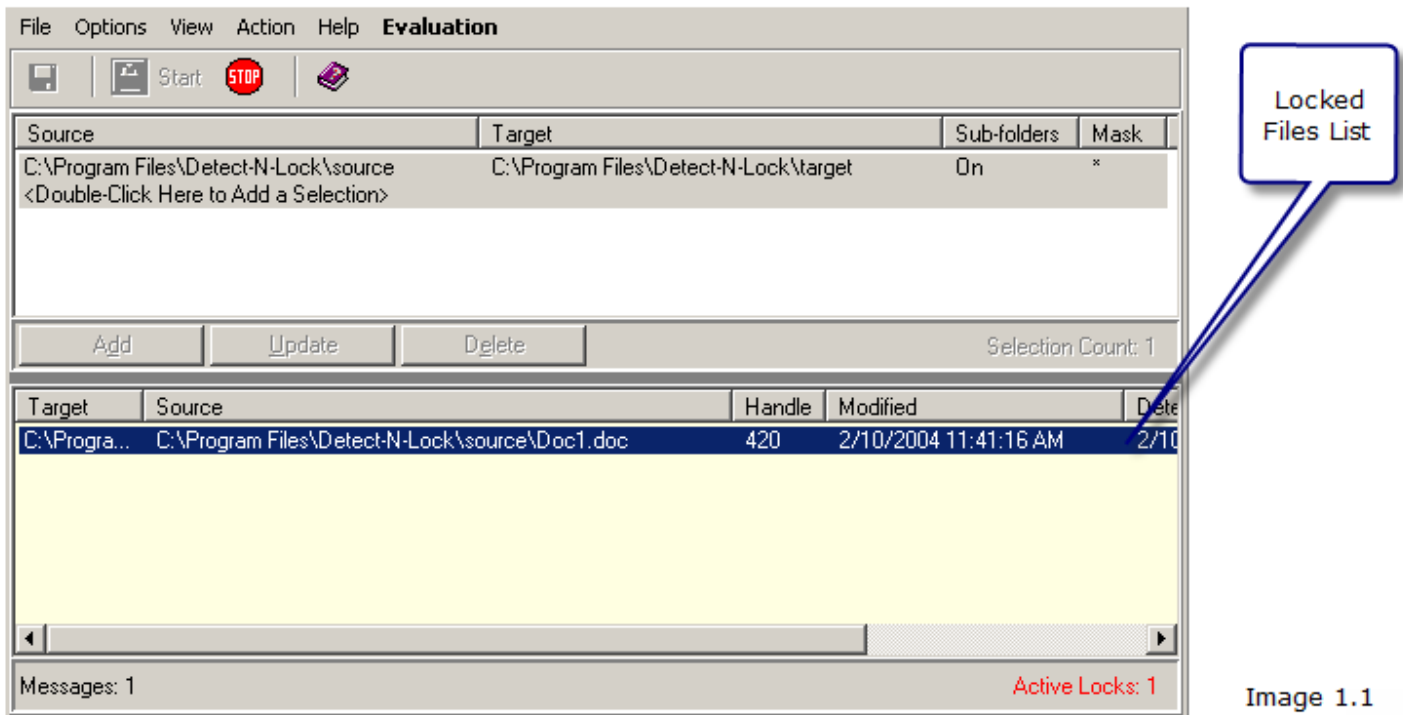


Image 1.1

Using Exclusive Lock Option

When a user tries to open a file in a watched folder on his/her local machine an Exclusive Lock Option, the file is immediately locked on the other machines specified in the user profiles list (see image 1.1). The other users will not be able to gain access to the file on all the Target machines.

The message displayed when a user tries to open the file is specific to the application being used. Below are some examples of Word and PowerPoint files trying to be opened on the Target Machine while in use on the Source Machine (see example images 1.2 and 1.3 overleaf).

Technical Note

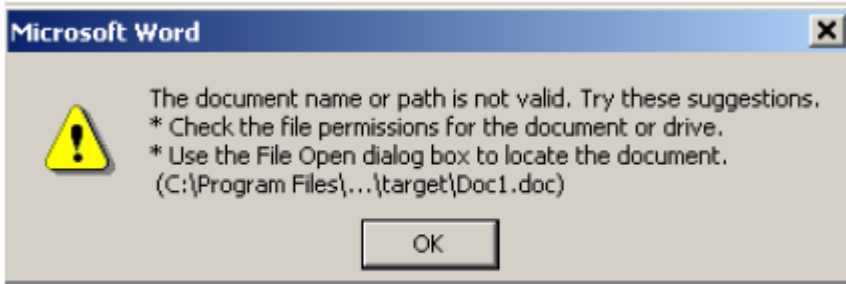


Image 1.2

When the user closes the file, the files residing on the other machines are immediately unlocked, and can now be accessed to make changes.

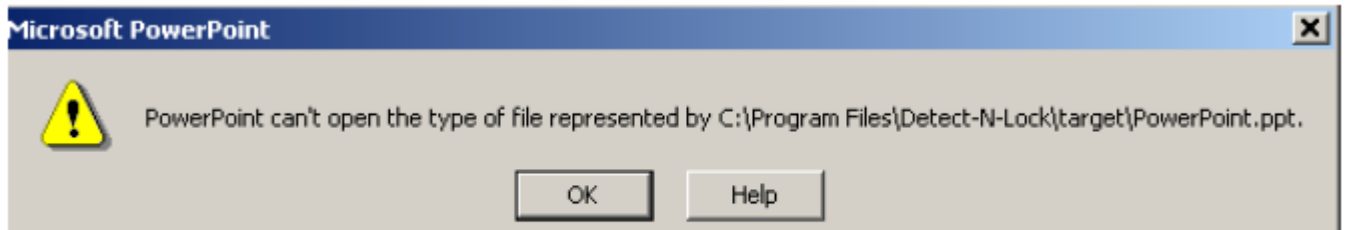


Image 1.3

Using Non-Exclusive Lock Option

When a user tries to open a file in a watched folder on their local server using a Non Exclusive Lock Option, the file is immediately locked (see image 1.1) on the other machines specified in the user profiles list. Depending on the application being used to access the file, other users might have options displayed when trying to open the file, or simply a non accessible message (see the images below).

Using Microsoft Word.

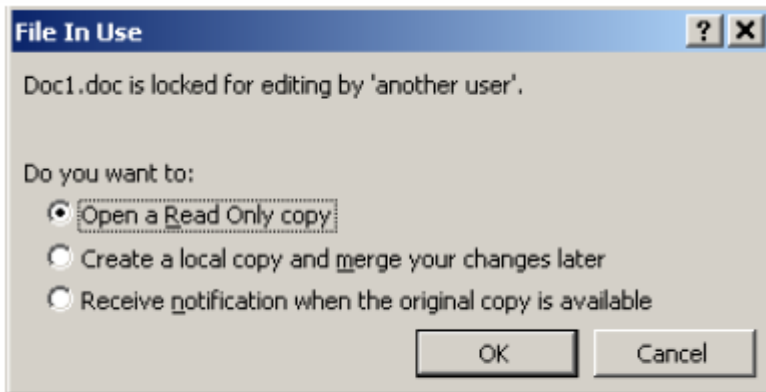


Image 1.4

Open a Read Only Copy: This option will let the user open the file in a read-only state. The user cannot make modifications to this file; however they will be able to review the file.

Create a local copy and merge your changes later: This option will let you create a copy of the file for you to modify and manually merge the changes at a later time.

Receive notification when the original copy is available: This option will let the user open the file in a read-only state. When the file becomes available the user will receive a notification.

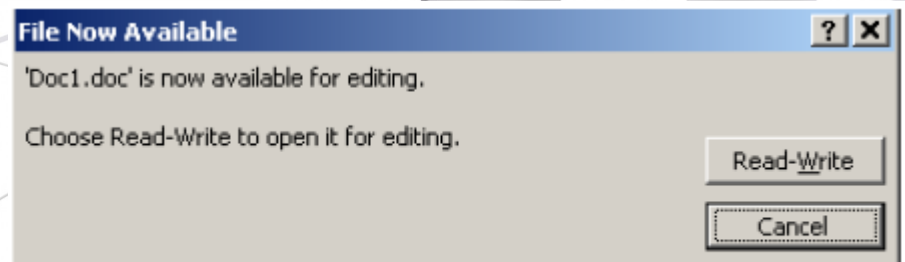


Image 1.5

Technical Note

Using Microsoft Excel

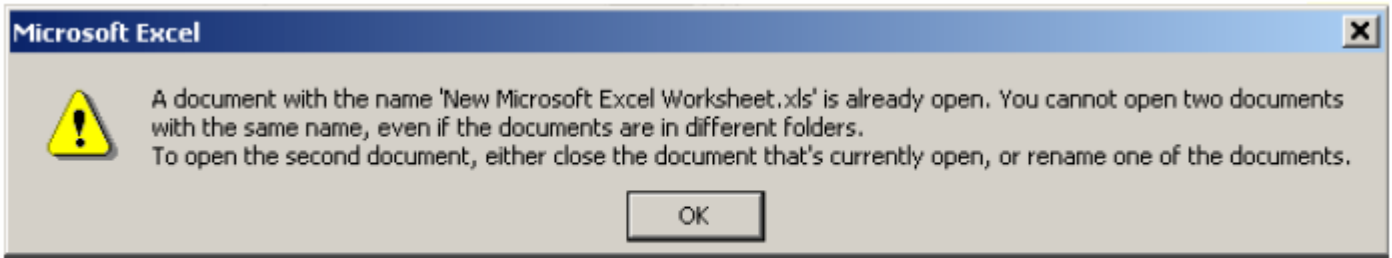


Image 1.6

Using PowerPoint

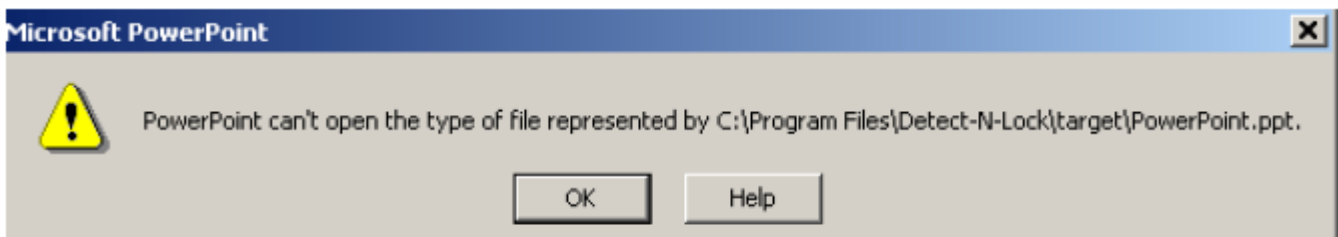
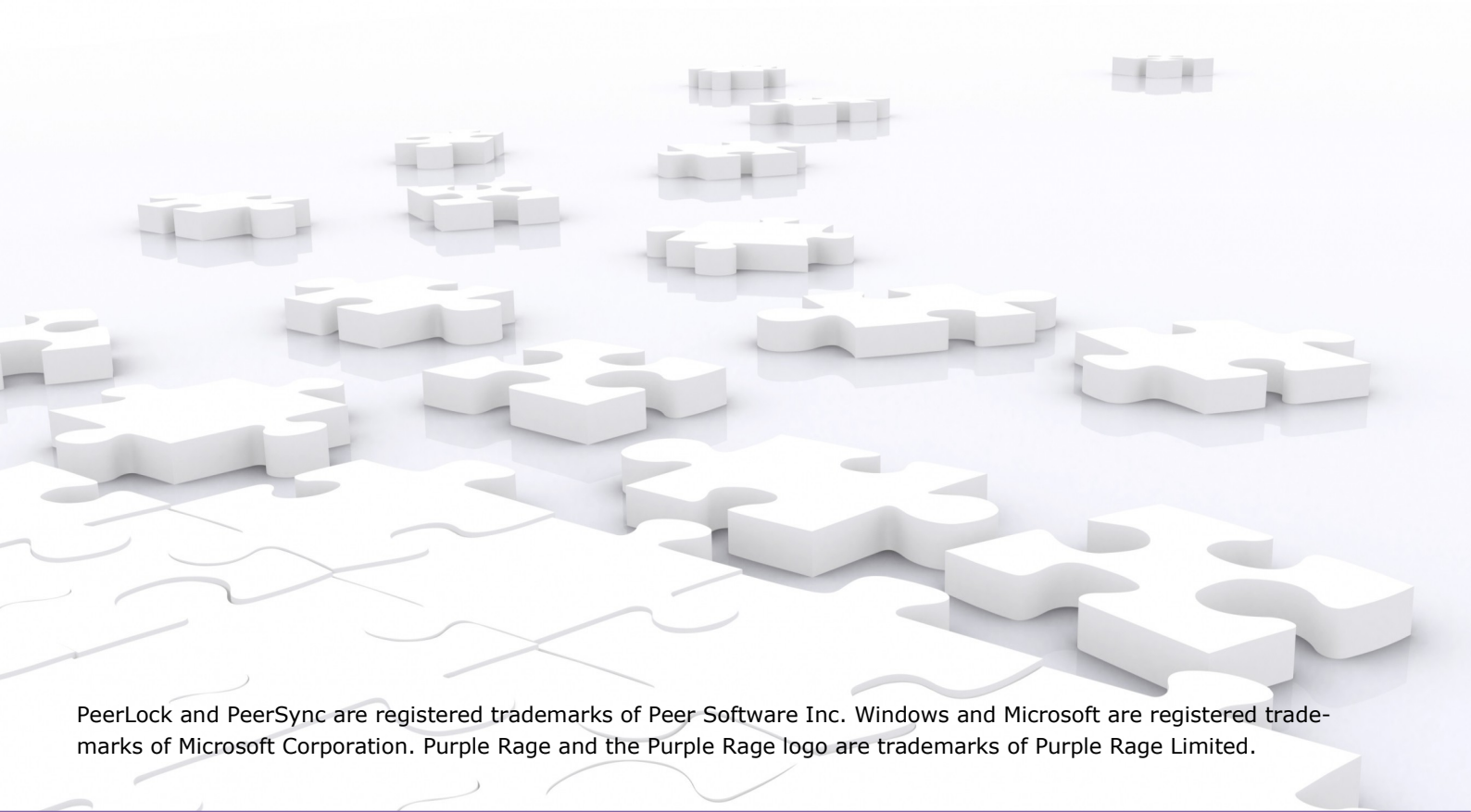


Image 1.7



PeerLock and PeerSync are registered trademarks of Peer Software Inc. Windows and Microsoft are registered trademarks of Microsoft Corporation. Purple Rage and the Purple Rage logo are trademarks of Purple Rage Limited.