



PeerLock Help Manual

1993-2004 Peer Software Inc. All Rights Reserved.

Table of Contents

Foreword	0
Part I PeerLock	2
1 Contents	2
2 Main Menu	3
3 Selection List	3
4 Lock List	7
5 Tool Bar	8
6 Reporting	9
Reporting	9
7 Command Line Arguments	10
Command Line Arguments	10
8 Other Features	13
Application Include/Exclude Lists	13
Message Dialog	15
Shortcuts	16
9 Product Information	16
Product Editions/Licensing	16
Registration	17
License	19
Index	22

1 PeerLock

1.1 Contents

(See Next: [Registration](#))

PeerLock

This product secures a user's files across a network of machines, ensuring that all copies of the files are locked while the user is working with the file. This security protects against multiple revisions occurring simultaneously on different machines.

How It Works

When a user opens a file in a watched folder on his/her local machine, the file is immediately locked on the other machines specified in the user selection list. Other users cannot make modifications to this file. When the user closes the file, the files residing on the other machines are immediately unlocked, and can now be used to make changes. PeerLock is designed to work with our PeerSync and Save-N-Sync products as to offer a total locking and synchronization solution.

Configuration

When using PeerLock specific environments will require certain options to be enabled/disabled. Each environment is unique and may require modifying the default options through the interface or by using [Command Line Arguments](#). For more help on how to configure PeerLock for your environment please visit the support section on our website at www.peersoftware.com/support.html.

The following help topics are available: (For help using this Help file, Press F1)

- [Main Menu](#)
- [Tool Bar](#)
- [Selection List](#)
- [Lock List](#)
- [Reporting](#)
- [Command Line Arguments](#)
- [Message Dialog](#)
- [License](#)

PeerLock Installations:

PeerLock is shipped (downloaded) in a full installation program. To run, simply double click on the executable file from the explorer (or choose Start Menu Run option and the select the application).

Upgrade Information:

Please refer to the WhatsNew and/or ReadMe files shipped with the PeerLock installation for the latest upgrade information.

Product Support

All support of PeerLock will be handled on our website (www.peersoftware.com) support page for this product.

The manufacturer of PeerLock makes no warranties, implied or otherwise, for use of this product. User assumes all responsibility for any data loss or damage.

1.2 Main Menu

(See Next: [Tool Bar](#))

The menu allows you to access all necessary functions, actions and options used by the application.

File Options View Action Help **Evaluation**

File

Gives you the ability to save application settings, add [Shortcuts](#) to the Desktop and/or Startup Folder and to exit the application. Also, in the [Server Edition](#) the menu will provide a Service menu that allows you to Install, Uninstall and view the Services dialog to configure PeerLock as a Service.

*Options

Allows you to configure [Detect/Lock Options](#), [Release Options](#), [Reporting](#) and [Application Include/Exclude Lists](#) features.

View

Allows you to view/hide the different sections of the application interface, view/clear log files and allow access to the [Message Dialog](#). Also, in the [Server Edition](#) this menu will provide a Folders menu that allows you to Create/View and Close Folder Selections in MS Windows Explorer.

*Action

Allows you to Setup, Start and Stop your Selections, as well as, enable/disable Auto Start and manually Release All Locks.

Help

Allows you to access this Help file, Product Level Information, our website, the About Screen and the [Register Software Screen](#).

Evaluation

Displayed during Evaluation, this item allows you to display the About Screen and access the [Register Software Screen](#).

Notes:

- Options and Action features can be set via [Command Line Arguments](#).
- For more information on Options and Action features see [Command Line Arguments](#).
- The Create/View and Close Folder Selections in MS Windows Explorer features are only available in the [Server Edition](#) of PeerLock.
- Service features are only available in the [Server Edition](#) of PeerLock.
- If you install PeerLock Server as a service, you must configure it to use an account that has access to all folder selections (i.e. a domain\admin account).
- If you install PeerLock Server as a service, you can still run it as an application but you should run only one instance (Application or Service) at a time.

1.3 Selection List

(See Next: [Lock List](#))

The Selection List allows you to select and view your current selections. Each selection consists of a Source folder, a Target folder or list of target folders, the option to include Sub-folders and a Mask for the types of files to be included. This section can be shown or not via the [View-Menu](#) and the Selection List Status Bar at the bottom of this list can be shown or not via the [View-Status Bars Menu](#).

Note: Please refer to [Product Editions](#) for Selection Limits.

Source	Target	Sub-folders	Mask
C:\Users\	N:\Users\,S:\Users\,T:\Users\;	On	*
<Double-Click Here to Add a Selection>			

Add Update Delete Selection Count: 1

Source Column

Each row contains a folder that you wish to monitor for files that are opened

Target Column

Each row contains a folder or a list of folders where the files that you wish to be locked upon a source file open reside.

Sub-folders Column

Each row contains a display of the option to watch just the root of the folder (Off) or to include sub-folders of your Source and Target selection (On).

Mask Column

Each row contains a display of a masking of the types of files you wish to include. File Types are specified by a star command followed by the file extension (i.e. *.doc;*.txt, etc.). The default setting (*) includes all files. Multiple Inclusions will be semi-colon delimited. Inclusions are not case sensitive, i.e. **A = a**.

Selection List Status Bar

This bar contains an Add, Update and Delete button, as well as, the current Selection Count Status.

Add Button

This button will display the [Add Selection Screen](#) where you can select a source folder, target folder list, the option to include sub-folders and the inclusion mask.

Edit Button

The Edit Button will display the [Update Selection Screen](#) where you can edit the source folder, target folder, the option to include sub-folders and the inclusion mask. This button is enabled when the selected item has an item selected.

Delete Button

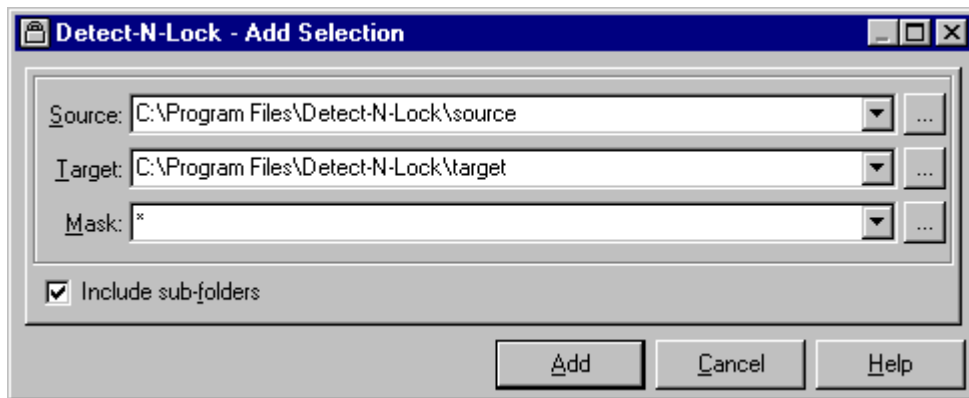
The delete Button will delete the selected item in the Selection List. This button is enabled when the selected item has an item selected.

Selection Count Status

Display of the current selection count.

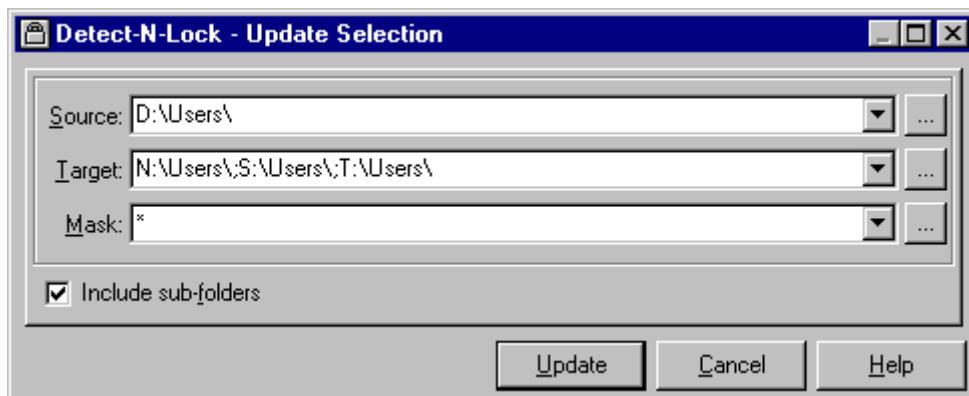
Add Selection Screen

This screen is used to add a new selection. By default this selection contains a source and target sub-folder of the installed folder with Include sub-folders enabled and a mask that includes all files. You can access this screen via the 'Action-Selections-Add'[Main Menu](#) item, by double clicking the '<Double-Click Here to Add Selection>' item in the Selection List or by right clicking on the Selection List and selecting 'Add' from the popup menu.



Update Selection Screen

This screen is used to update an existing selection. You can access this screen via the 'Action-Selections-Update' [Main Menu](#) item, by double clicking an existing item or by right clicking on the Selection List and selecting 'Update' from the popup menu.



The functionality of the Add Selection Screen and the Update Selection Screen is identical. The following features pertain to both of these screens:

Source

Select a Source Folder by typing the file path into the field provided, dragging and dropping from MS Windows Explorer into the field provided or by using the Select Source Button to the right of this field. All source folder selections must reside on the local machine.

Note: Please refer to [Product Editions](#) for source Selection Limits.

Select Source Button

This button opens a "Browse for Folder" dialog box: once this box has opened, locate your chosen Source folder, select it using the left mouse button, and click "OK." or by double-clicking the Source field.

Target

Select a Target Folder by typing the file path into the field provided, dragging and dropping from MS Windows Explorer into the field provided or by using the Select Target Button to the right of this field. For multiple target selections use a semi-colon delimiter as depicted above.

Note: Please refer to [Product Editions](#) for target Selection Limits.

Select Target Button

This button will display a 'Target Folder Selection' dialog that will allow you to add targets.



To add a target folder, click "New", then type the desired target folder into the field located at the bottom of the dialog. or you can use the browse for folder button. This button opens a "Browse for Folder" dialog box: once this box has opened, locate your chosen Target folder, select it using the left mouse button, and click "OK." Repeat this process for each desired target folder. Target folders can be deleted by selecting them from the list and clicking the "Delete" key at the bottom of the dialog box. Once you have finished, click the "OK" button. The dialog will close and all of the Target folders you have specified will automatically appear in the Target field in the proper format (separated by semi-colons).

Mask

Select a mask inclusion by typing file types into the field provided using, dragging and dropping files from MS Windows Explorer into the field provided or by using the Select Mask Button to the right of this field. For multiple selections use a semi-colon delimiter.

Select Mask Button

This button will display a 'Mask Selection' dialog that will allow you to add mask inclusions.



To add a mask inclusion, click "New", then type the desired mask string (i.e. ***.doc**) into the field located at the bottom of the dialog. Repeat this process for each desired mask string. Mask strings can be deleted by selecting them from the list and clicking the "Delete" key at the bottom of the dialog box. Once you have finished, click the "OK" button. The dialog will close and all of the Mask strings you have specified will automatically appear in the Mask field in the proper format (separated by semi-colons).

Include Sub-folders

Option to enable/disable the including of sub-folders during for the current selection.

Notes:

- PeerLock Workstation allows for 15 Source Selections with each allowing for up to 3 Targets.
- PeerLock Server allows for 255 Source Selections with each allowing for up to 100 Targets.
- Folders can be dragged and dropped from MS Windows Explorer into these fields.
- The drop-down lists will be dynamically populated with source-target folders, as they are set.
- You can delete items from drop-down lists by dropping the list and selecting the item and pressing the delete key..
- UNC names can be entered manually, or can be selected from the Network Neighborhood.
- UNC names will appear in the form: \\COMPUTER\SHAREDDEVICE\PATH

1.4 Lock List

(See Next: [Reporting](#))

The Lock List is a display of the current status of PeerLock. The list contains source files that have been detected and what target files have been locked, as well as, other information about each set of source and target file. The Lock List Status Bar at the bottom of this list can be shown or not via the [View-Status Bars Menu](#) .

Target	Source	Handle	Modified	Detected/Locked	Application	Duration	Lock File Handle
N:\Users\Document1.doc	C:\Users\Document1.doc	304	6/18/2004 11:45:40 AM	6/18/2004 11:49:26 AM	WINWORD.EXE	00:06:18	300
S:\Users\Document1.doc	C:\Users\Document1.doc	320	6/18/2004 11:45:40 AM	6/18/2004 11:49:27 AM	WINWORD.EXE	00:06:17	316
T:\Users\Document1.doc	C:\Users\Document1.doc	328	6/18/2004 11:45:40 AM	6/18/2004 11:49:27 AM	WINWORD.EXE	00:06:17	324
N:\Users\Worksheet1.xls	C:\Users\Worksheet1.xls	340	6/18/2004 11:50:16 AM	6/18/2004 11:50:15 AM	EXCEL.EXE	00:05:29	336
S:\Users\Worksheet1.xls	C:\Users\Worksheet1.xls	348	6/18/2004 11:50:16 AM	6/18/2004 11:50:16 AM	EXCEL.EXE	00:05:28	344
T:\Users\Worksheet1.xls	C:\Users\Worksheet1.xls	356	6/18/2004 11:50:16 AM	6/18/2004 11:50:16 AM	EXCEL.EXE	00:05:28	352

Messages: 0 Active Locks: 6

Target Column

Each row contains a file name complete with folder path for a target file that is locked, if the file exists and can be locked.

Source Column

Each row contains a file name complete with folder path for the source file that has been detected as an open file.

Handle Column

Each row contains a display of the Handle that is being used to Lock the target file. If the target file does not exist or can be locked this will display 'None'.

Modified Column

Each row contains a display of the modified date/time of the source file when it was detected as being open.

Detected/Locked Column

Each row contains a display of the date/time of when the source file was opened.

Application Column

Each row contains a display of the application that has been detected as opening the source file. to include and/or exclude applications please refer to the [Command Line Arguments](#).

Duration Column

Each row contains a display of the amount of time that the source file has been opened.

Lock File Handle Column

Each row contains a display of the Handle that is being used to Lock the temporary Lock File created by PeerLock to [Interact with other Peer Software Products](#). If the Interact features are disabled then this will display 'None'.

Lock List Status Bar

This bar contains the current Message count and Active Lock counts. By clicking on the messages label you can view the [Message](#) dialog for more information on the reason you have messages. The Active Lock count will display 'Inactive' if PeerLock is not configured and or set to start.

1.5 Tool Bar

(See Next: [Selection List](#))

The Tool Bar section allows you to quickly access most of the commonly used menu items. This section can be viewed/hidden by selecting/unselecting it under the [View Main Menu](#) item.



Save Settings

Allows you to save the current application settings as the default settings.

Start

Allows you to start the current selections.

Stop

Allows you to stop the current selections.

Help

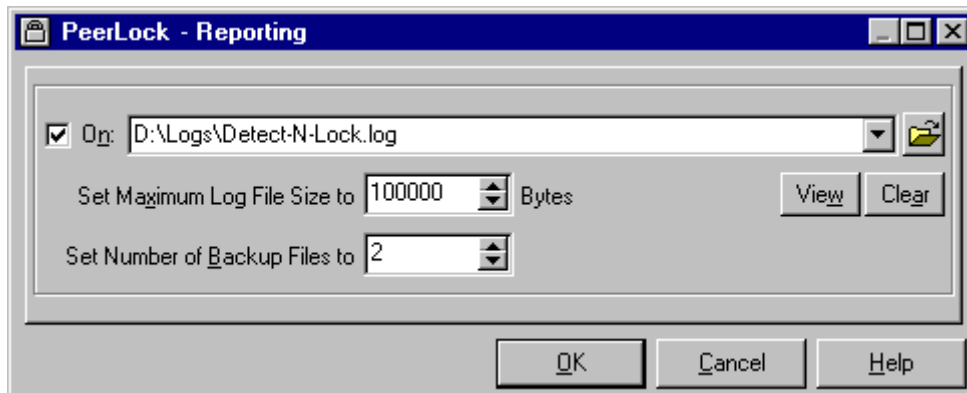
Allows you to access this help file.

1.6 Reporting

1.6.1 Reporting

(See Next: [Command Line Arguments](#))

The Reporting section allows you to turn On/Off reporting, select, browse for and view the selected log file, as well as, set the maximum log file size and the number of backup log files to use



Reporting

Selecting and turning this option On/Off will enable/disable log file reporting. Once checked, select a Log File by typing the file path into the field provided, or by using the Select Log File Button. By default, the log file field will use the path in which the application has been installed: in most cases this will be 'C:\Program Files\Application Name' and will assume a default log file name such as PeerLock.log.

Select Log File Button

This button opens a "Select Directory" dialog box: once this box has opened, locate your chosen Log File directory, select it using the left mouse button, and click "OK."

View Log File Button

When this is selected the log file will be displayed in the default text editor.

Clear Log File Button

When this is selected the log file will be cleared.

Set the Maximum Log File Size to x Bytes

Allows you to specify the maximum size of the log files to be created.

Set Number of Backup Files to x

Allows you to specify the amount of backup log files to be created.

If you set the number of backup log files to 0 then at the time your log file reaches its maximum size it will be deleted and recreated on the next log entry. If you set the number of backup log files to a value of 1..n then when your log file reaches its maximum size it will be renamed to a file with the extension .bak plus the number backup the file is.

Example: Setting the number of backup log files to 2 will produce the following log files:

LogFileName.log (newest information)

LogFileName.bak1 .

LogFileName.bak2 (oldest information)

Notes:

- The drop-down lists will be dynamically populated with log file names, as they are set.
- Files can be dragged and dropped from MS Windows Explorer into the 'Reporting' field.

1.7 Command Line Arguments

1.7.1 Command Line Arguments

(See Next: [Application Include/Exclude Lists](#))

The applications Command Line Mode offers users the ability to configure a truly "hands-off" installation, where operation and distribution occurs from within an easily manageable, administrative environment. This mode allows Actions to be executed from logon scripts, system batch or command (CMD) files, detailed shortcuts, and shell commands.

Note: For the command line arguments described in this topic, note that attention is paid to punctuation, to the order in which arguments are entered, and that appropriate spaces are used to separate these arguments. Follow the format outlined in the examples provided.

Application Command Line Arguments

The following arguments are appended to the end of the command line followed by a space and forward slash (i.e. /A). A space and forward slash are also used to separate each additional argument (i.e. /A /DC+).

Note: Before creating Application Command Line Arguments what you might find useful are our [Shortcuts](#)

To create a shortcut from the interface and access the command line you want you can:

- Set up the job you wish to run and run it from the interface.
- Then go to the 'File-Shortcuts' menu item.
- Select 'Add to Desktop' or 'Add to Startup Folder'.
- Right click on the Shortcut and select 'Properties'.
- Go to the target field and view/copy the command line string.

Alternate Configuration File: By default PeerLock stores all of its settings in a configuration file called PLDef.cfg. This file may be modified with a text editor but doing so is not recommended. Also, you can load from an alternate configuration file by adding a file name that has a *.cfg extension to your command line (i.e. MyPLConfig.cfg).

Arguments:

/A

Auto Start: This argument is used to start PeerLock automatically.

M

Minimized*: This argument is used to run PeerLock automatically and minimized.

Examples:**/A**

Auto Start

/AMAuto Start - Minimized

/D

Detect/Lock Options: This argument is used to set the following options during the detection/locking of files:

C+ or C-

Check For File Name In Caption: Looks for the source file name in all open application captions when deciding if a file is open or not. This option is on by default.

E+ or E-

Strip File Extension (Check For File Name In Caption): When using the Check For File Name In Caption option this option will strip off the file extension when looking for file names in all open application captions. This option is on by default.

P+ or P-

Strip File Path (Check For File Name In Caption): When using the Check For File Name In Caption option this option will strip off the file path when looking for file names in all open application captions. This option is on by default.

D+ or D-

Detect Files Even when Target Does Not Exist: Detects and tracks source file opens even if the corresponding target file does not exist. This option is on by default.

L+ or L-

Use Exclusive Lock: Uses an exclusive lock on target files, meaning once the lock is applied no other applications can get a lock on the target file. If this option is turned off the lock set on target files will allow for other applications to still obtain a handle and get their own lock on the file. This option is on by default.

I+ or I-

Interact with PeerSync and/or Save-N-Sync*:** Communicates/Notifies PeerSync and/or Save-N-Sync to exclude source files that are detected as open until the file has been released. This option is off by default and the caption of the option will display the name of the Peer Software product that is installed if applicable.

J+ or J-

Interact with Remote PeerLocks*:** Communicates/Notifies remote PeerLocks that may be running on your target machine(s) to exclude the detection of the local PeerLock locking files on the remote machine. This option should be enabled when running PeerLock on multiple machines pointing at each other. This option is off by default .

O+ or O-

Check for File Open On Detection: This option will validate for a false detection of an open file by doing a secondary validation that the file is open on detection of the open file. This option is off by

default.

M:n

Set Detection Method Level (n = 1 - 31): PeerLock uses up to five methods of detection to determine if a file is open and in use. Using a value between 1 and 31 will enable any combination of the five methods. The first four methods are used by default (a value of 15 {1 + 2 + 4 + 7}) . Each method is represented by 2 to the x value:

1 = Method 1
2 = Method 2
4 = Method 3
8 = Method 4
16 = Method 5

Examples:

`/DC+E+P+D+L+I-O-M15`

Default Settings

`/DC-E-P-D-L-I-O-M31`

All Options Off and All Detection Methods On

/R

Release Options: This argument is used to set the following options during the release of files:

S+ or S-

Trigger Event: This option will check to see if the source file has been updated by looking at the current modified date/time stamp versus the stored modified date/time stamp. If the file has been updated PeerLock will trigger an event to be detected by synchronization products to update the corresponding target file(s) with the updated source file upon release from the [Lock List](#).

A+ or A-

Wait for Associated Application to Close: This option will check to see if the application that opened the source file is still running before releasing the corresponding target file(s) from the [Lock List](#). This option is useful when an application does not retain a handle on the files that are opened by itself. When this option is enabled, the target files will not be released until all instances of the application terminate. By default some application names are excluded from this check (i.e. Explorer.exe). The default exclusion list for this option can be modified by editing the configuration file (PLDef.cfg).

F:n

Release Frequency (n = frequency in milliseconds): Sets the frequency to check the [Lock List](#) for source files that have been closed or released. The default is every 3000 milliseconds or 3 seconds.

Examples:

`/RS+A-F3000`

Trigger Event On, Wait for Associated Application to Close Off and Check for Released Files every 3 Seconds (Default)

`/RS-A+F1000`

Trigger Event Off, Wait for Associated Application to Close On and Check for Released Files every 1 Second

/! :a1;a2..an

Include Applications (a = Applications to Include during Detection):** This argument is used to build a list of applications to Include during detection. For multiple applications use a semi-colon delimiter. By default all applications are included. This can also be configured from the interface via the [Application Include/Exclude Lists](#) .

Examples:

`/I:*` Include detection of file opens from all applications
`/I:WINWORD.EXE;EXCEL.EXE` Include detection of file opens from MS Word and MS Excel

/E:a1;a2..an

Exclude Applications (a = Applications to Exclude during Detection):** This argument is used to build a list of applications to Exclude during detection. For multiple applications use a semi-colon delimiter. By default a list of applications are excluded including Explorer, PeerLock, PeerSync and Save-N-Sync. This can also be configured from the interface via the [Application Include/Exclude Lists](#).

Examples:

`/E:` Do not exclude any applications
`/E:EXPLORER.EXE;PEERLOCK.EXE` Only exclude PeerLock and PeerSync

Notes:

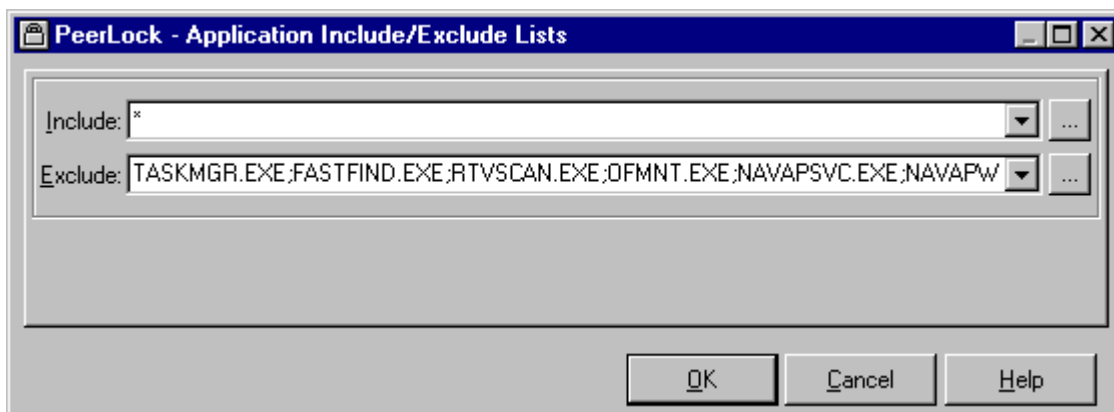
- Any arguments containing spaces must be enclosed by quotes.
- Most of these options can be set from the interface via the [Main Menu](#).
- * The run minimized argument is not available during evaluation.
- ** By Observing at the [Lock List Application Column](#) you can determine what applications you may want to Include or Exclude.
- *** The default folder for these options is the target folder. By using a **/DK** argument a sub-folder 'PSLock' of the windows directory (i.e. C:\WINNT\PSLock) will be used instead. When using the **/DK** argument you can change the 'PSLock' folder location by using the Set PSLock Folder Location menu option.

1.8 Other Features

1.8.1 Application Include/Exclude Lists

(See Next: [Message Dialog](#))

The Application Include/Exclude Lists menu item, accessible from the [Options Menu](#), displays the following dialog. This dialog allows you to select applications to include and/or exclude from the event detection used to determine open source files.



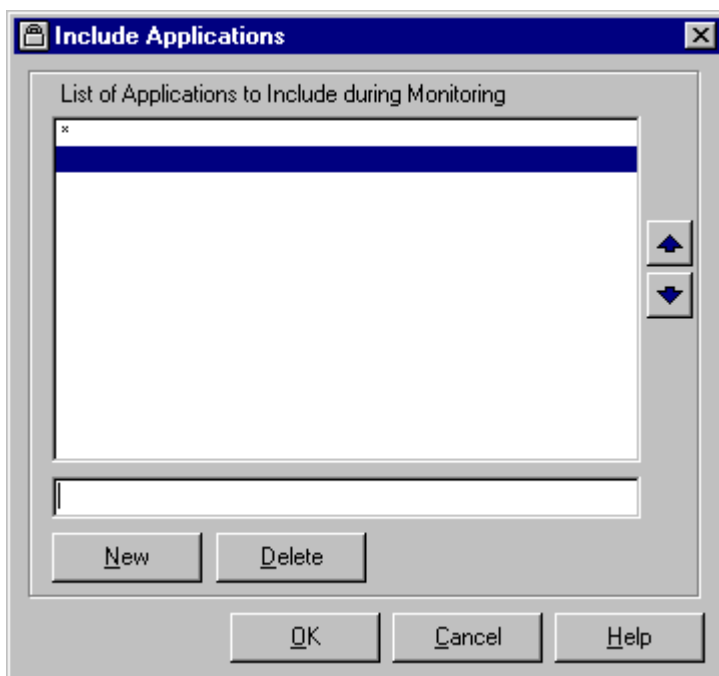
Include Applications

Use this field to determine which applications to include in the event detection used to determine open source files.

- The default setting (*) includes all applications.
- Multiple Includes can be used and are semicolon delimited (i.e. WINWORD.EXE;EXCEL.EXE)
- Includes are not case sensitive, i.e. "A" = "a".
- Includes can be typed manually, or can be specified using either the drop-down list located or the Include Applications Button to the right of the field.

Include Applications Button

Opens an "Include Applications" dialog box into which application names may be entered.



To add an application to include, click "New", then type the desired application name into the field located at the bottom of the dialog. Repeat this process for each desired application to include. Includes can be deleted by selecting them from the list and clicking the "Delete" key at the bottom of the dialog box. Once you have finished, click the "OK" Button. The dialog will close and all of the Includes you have specified will automatically appear in the Include Applications field in the proper

format (separated by semicolons).

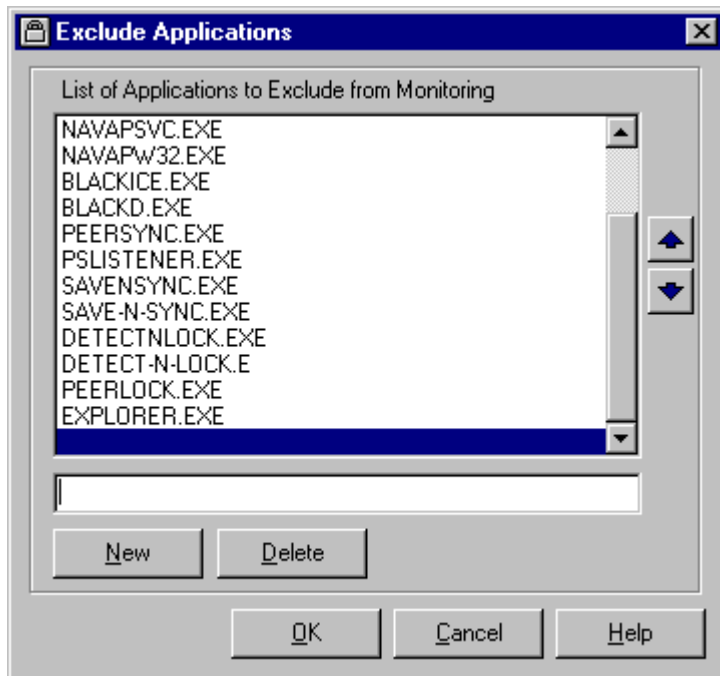
Exclude Applications

Use this field to determine which applications to exclude in the event detection used to determine open source files.

- The default setting includes a list of applications may trigger unwanted detection.
- Multiple Excludes can be used and are semicolon delimited (i.e. EXPLORER.EXE;PEERLOCK.EXE)
- Excludes are not case sensitive, i.e. "A" = "a".
- Excludes can be typed manually, or can be specified using either the drop-down list located or the Exclude Applications Button to the right of the field.

Exclude Applications Button

Opens an "Excludes Applications" dialog box into which application names may be entered.

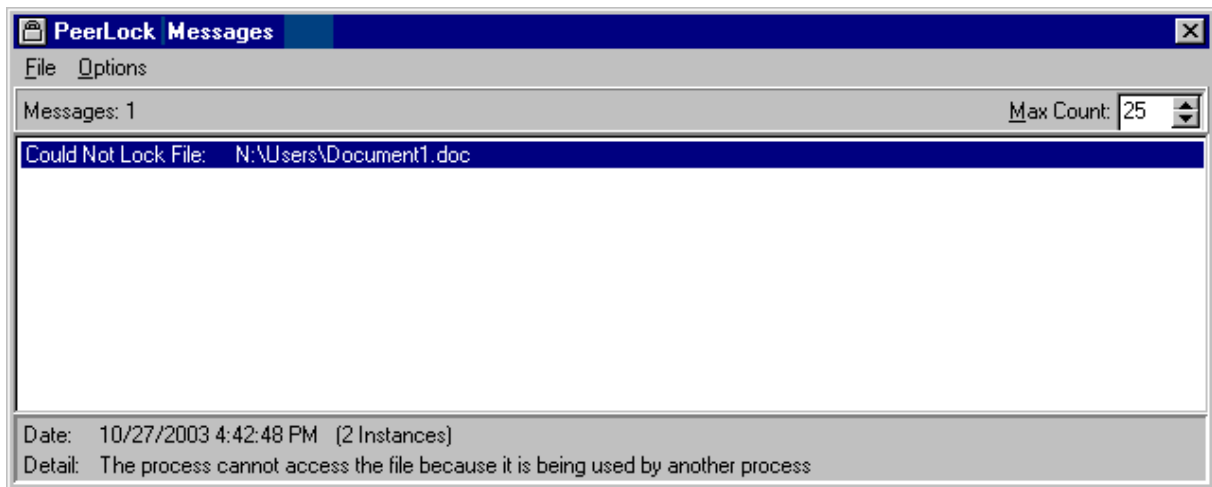


To add an application to exclude, click "New", then type the desired application name into the field located at the bottom of the dialog. Repeat this process for each desired application to exclude. Excludes can be deleted by selecting them from the list and clicking the "Delete" key at the bottom of the dialog box. Once you have finished, click the "OK" Button. The dialog will close and all of the Excludes you have specified will automatically appear in the Exclude Applications field in the proper format (separated by semicolons).

1.8.2 Message Dialog

(See Next: [Product Levels](#))

The message dialog displays any messages that have occurred during the current operation. You can specify the Max Count by selecting this value for the amount of messages to retain. You may also view the date and details for each message by clicking on that message.

**File**

Gives you the ability to close the Message Dialog and to terminate the Application.

Options

Allows you to turn On/Off the Auto Display option, turn On/Off the Show Tray Icon Option, Clear the Message List, view/clear the Log File, and Show the Application.

Message Count

This is the number of "unique" messages being displayed. If a message is reported more than once, the number of instances will be specified at the end of the 'Date' field.

Max Count

This is the maximum number of messages to keep in the messages to retain

1.8.3 Shortcuts

To create a shortcut from the interface do the following:

- Set up the job you wish to run and run it from the interface.
- Then go to the 'File-Shortcuts' [Main Menu](#) item.
- Select 'Add to Desktop' or 'Add to Startup Folder'.

1.9 Product Information

1.9.1 Product Editions/Licensing

(See Next: [License](#))

Product Editions**Workstation:**

- Will not run on Servers
- Allows up to 15 [Source Selections](#)
- Allows up to 3 [Targets per Source Selection](#)

Server:

- All Options from the Standard Edition
- Will run on Servers

- Allows up to 255 [Source Selections](#)
- Allows up to 100 [Targets per Source Selection](#)
- Allows for [Remote Source Selections](#)
- Can be [Run as a Service](#)
- Feature to [Create/View and Close Folder Selections](#) in MS Windows Explorer

Product Licensing

PeerLock can be licensed for single or multiple users.

User Licensing: A single user license, by default, comes with right to install/execute the software on one PC and connect to one or more remote PCs or unlimited local drives. A license must be purchased for each PC where the product will be installed, executed or launched. This also applies to Enterprise installations that run the software off a network file server.

For more information about Product Levels and Licensing please visit our web site:
www.peersoftware.com

Note: Peer Software is quite flexible in assembling different combinations of option packages than the ones listed here for enterprise installations with customers' requirements in mind. Please contact us for such requests and for more detail of the PeerLock option packages that are available.

1.9.2 Registration

(See Next: [Main Menu](#))

If this is an unregistered or evaluation copy of PeerLock, you can register it with Peer Software, Inc. as a fully licensed copy by providing credit card information via phone or secure Internet registration, or by sending a check or money order to the address below (see included "readme.txt" file for pricing information).

Register online via secure internet credit card registration at:
www.peersoftware.com

Register by phone via credit card by calling:
(631) 979-1770 between the hours of 9:00 AM and 4:00 PM EST

Register by mail, send check or money order to:
Peer Software, Inc.
1363 Veterans Highway, Suite 26
Hauppauge, NY 11788

Product Support

All support of PeerLock will be handled on our website (www.peersoftware.com) support page for this product.

Information Required:

- Full name (as it appears on the credit card)
- Address (City, State / Province, Country, and Postal Code)
- Phone Number
- Entire Card Number
- Card Expiration Date
- Email Address

(Peer Software will send the Authorization Key required to unlock PeerLock's Evaluation. This key is to be entered during the installation of the software.)

Quantity Discounts - See Web site for more information.

PeerLock may not be commercially distributed or distributed by government agencies including their contractors UNLESS registration fees are paid for by the distributing party.

See License agreement for product redistribution.

Note Regarding Updates: As new updates/changes become available, updated versions of the software will be posted on our Internet Web page "www.peersoftware.com." Check this page periodically to download the latest executables. Your Authorization Key will continue to work with updated versions unless a major release is issued, or PeerLock is installed in a different folder than the previously installed/authorized version.

Entering Your User Information and Password

Evaluation copies do not require user information and passwords.

Registration copies require you to enter a Registration Key into the Register Software Screen.

Register Software Screen

About PeerLock

PEER
SOFTWARE INC.

PeerLock

Phone: 631-979-1770 Fax: 631-979-1870
support@peersoftware.com www.peersoftware.com

User Name:

Company:

Key: -

To Access the above screen go to the 'Help - Register PeerLock' Menu item or select the 'Enter Authorization Key' link from the Evaluation About Screen.

Terms And Conditions

Read [License](#) agreement before using this program.

Suggestions, Comments, or Requests for Support:

Peer Software, Inc.
1363 Veterans Highway, Suite 26,
Hauppauge, NY 11788
Phone: (631) 979-1770
FAX: (631) 979-1870
Email: support@peersoftware.com

Copyright 1994-2003, Peer Software, Inc.
PeerLock is a registered trademark of Peer Software, Inc.
Embedded Open File Manager is a registered trademark of St. Bernard Software.
All Rights Reserved. Reproduction in whole or in part without permission is strictly prohibited.

1.9.3 License

(Go Back to: [Contents](#))

YOU SHOULD READ CAREFULLY THE FOLLOWING TERMS AND CONDITIONS BEFORE USING OR DISTRIBUTING THIS SOFTWARE. USING OR DISTRIBUTING THIS SOFTWARE INDICATES ACCEPTANCE OF THESE TERMS AND CONDITIONS.

COPYRIGHT

This software program (hereafter the "Software") and documentation (hereafter the "Documentation") is copyrighted and remains the property of Peer Software, Inc. (Formerly known as TDM, Inc.) All rights are reserved.

LICENSE

Peer Software, Inc. hereby grants you (hereafter the "Purchaser") a limited, non-exclusive license to use the Software and accompanying Documentation contained in the trial ware distribution package (hereafter called the "Trial ware Package") you received. The Trial ware Package consists of copies of the Software and Documentation received via an electronic transfer mechanism or an electronic storage medium including, but not limited to, diskette, hard disk, removable disk, tape or optical devices such as CD-ROM or WORM.

You may use the Trial ware Package on one or more computers provided there is no chance that it will be used simultaneously on more than one computer. If you need to use the Software on more than one computer simultaneously or on a network, please contact Peer Software, Inc. for information about network licenses.

You are not obtaining title to the Software or Documentation or any copyright rights. You may not sublicense, lease, rent, sell, convey, translate, modify, decompile, incorporate into another product, convert to another programming language, reverse engineer or disassemble the Software or Documentation for any purpose.

NETWORK LICENSE

Multiple users on a network (e.g. a LAN) requiring access to the Software and Documentation must purchase a Network License. Two forms of Network Licenses are offered, a Site License and a Concurrent User License. With a Site License, any user who accesses the Software or Documentation requires a user license, regardless of the frequency of use. Once a Site License is purchased, Software and Documentation may be copied to all users who have been licensed.

The Concurrent User License allows the licensed number of users to simultaneously access the Software and Documentation. The Purchaser agrees that he will operate metering software, which

restricts the simultaneous number of users to the quantity purchased. The Software and Documentation must be installed on network servers under the control of metering software.

Both Site and Concurrent User Licenses allow installation of the Software and Documentation to any number of servers on any number of geographic sites, limited only by the quantity of licenses purchased.

TERM AND TRIAL PERIOD

You are permitted to use the Software Package for a trial period (hereafter the "Trial Period") of a limited amount of days or uses (whichever comes first) after receipt of the Trial ware Package. After such time, if you continue to use the Trial ware Package, you must register your copy with Peer Software, Inc. Failure to register after the Trial Period constitutes termination of this license. Upon registration, a password (hereafter called the "Password") will be provided to eliminate the registration reminder screen.

This license is effective until terminated. You may terminate it by destroying the Software, Documentation, and all copies thereof. This license will also terminate if you fail to comply with any of the terms or conditions herein. You agree, upon such termination, to destroy all Software, Documentation, and copies thereof.

LIMITED WARRANTY

THE SOFTWARE AND DOCUMENTATION IS PROVIDED "AS IS" WITHOUT WARRANTY OF ANY KIND. PEER SOFTWARE, INC. DISCLAIMS ALL WARRANTIES RELATING TO THIS SOFTWARE, WHETHER EXPRESSED OR IMPLIED, INCLUDING BUT NOT LIMITED TO ANY IMPLIED WARRANTIES OF MERCHANTABILITY AND FITNESS FOR A PARTICULAR PURPOSE, AND ALL SUCH WARRANTIES ARE EXPRESSLY AND SPECIFICALLY DISCLAIMED.

EXCLUSIVE REMEDY

YOUR EXCLUSIVE REMEDY AND PEER SOFTWARE, INC.'S ENTIRE LIABILITY ARISING FROM OR IN CONNECTIONS WITH THE SOFTWARE, DOCUMENTATION, AND/OR THIS LICENSE (INCLUDING WITHOUT LIMITATION FOR BREACH OF WARRANTY OR INFRINGEMENT) SHALL BE, AT PEER SOFTWARE, INC.'S OPTION, THE REPAIR OR REPLACEMENT OF THE SOFTWARE OR REFUND OF REGISTRATION FEES.

LIMITATIONS OF LIABILITY

IN NO EVENT SHALL PEER SOFTWARE, INC. OR ANYONE ELSE WHO HAS BEEN INVOLVED IN THE CREATION, PRODUCTION, OR DELIVERY OF THIS SOFTWARE SHALL BE LIABLE FOR ANY DIRECT, INDIRECT, CONSEQUENTIAL OR INCIDENTAL DAMAGES, ARISING OUT OF THE USE OR INABILITY TO USE SUCH SOFTWARE EVEN IF PEER SOFTWARE, INC. HAS BEEN ADVISED OF THE POSSIBILITY OF SUCH DAMAGES OR CLAIMS.

Some states do not allow the exclusion of the limit of liability for consequential or incidental damages, so the above limitation may not apply to you.

BACK-UP

You may make as many copies of the Trial ware Package as you need for back-up purposes only.

DISTRIBUTION

You may distribute the Trial ware Package to others via an electronic transfer mechanism or electronic storage media provided that no files are deleted from the Original Distribution Trial ware Package or are modified in any way. Files may be added to the Trial ware Package expressly for the purpose of identifying the party distributing the Trial ware Package. You may also place the Trial ware Package

into any archive or compressed format for ease of distribution.

You may not distribute the Password to others under any circumstances.

GENERAL

This agreement shall be governed by the laws of the state of New York and shall inure to the benefit of Peer Software, Inc. and any successors, administrators, heirs, and assigns. Any action or proceeding brought by either party against the other arising out of or related to this agreement shall be brought only in a STATE or FEDERAL COURT of competent jurisdiction located in Suffolk County, New York. The parties hereby consent to appear in person in jurisdiction of said courts.

Index

- / -

/A (Auto Start) 10
/D (Detect/Lock Options) 10
/E (Exclude Applications) 10
/I (Include Applications) 10
/R (Release Options) 10

- A -

Action 3
Add Button 3
Add Selection Screen 3
Add to Desktop 10
Add to Startup Folder 10
Alternate Configuration File 10
Application Column 7
Application Include/Exclude Lists 13
Applications to Exclude during Detection 10
Applications to Include during Detection 10
Argument for PeerSync Interaction 10
Argument for Save-N-Sync Interaction 10
Arguments 10
Associated Application Exclusions 10
Associated Application Option 10
Auto Start 10

- B -

Backup log files 9
Bi-directional PeerLock Option 10

- C -

Check For File Name In Caption 10
Check for File Open On Detection 10
Clear Log File 3
Clear Log File Button 9
Close Folder Selections 3, 16
Command Line Arguments 10
Configuration File 10
Contents 2

Create Shortcuts 3
Create/View Folder Selections 3, 16

- D -

Delete Button 3
Desktop 10
Detect Files Even when Target Does Not Exist: 10
Detect/Lock Options 3
Detected/Locked Column 7
Detection Method Level 10
Duration Column 7

- E -

Edit Button 3
Editions 16
Entering Your User Information and Password 17
Exclude Applications 10, 13
Exclude Processes 13
Exclusive Lock 10

- F -

Features by Product 16

- H -

Handle Column 7
Help 8
How It Works 2

- I -

Include Applications 10, 13
Include Processes 13
Include Sub-folders 3
inclusion 3
Interact with Peer Software Products 10
Interact with Remote PeerLocks 10

- L -

License 19
Licensing 16
Lock File Handle Column 7

Lock List 7
 Lock List Status Bar 7
 Log File 9

- M -

Machine to Machine PeerLock Option 10
 Mask 3
 Mask Column 3
 Maximum Log File Size 9
 Menu 3
 Message count 7
 Message Dialog 3, 15
 Minimized 10
 Modified Column 7

- N -

Number of Backup Files 9

- O -

Options 3

- P -

Peer Software Products Interaction 10
 PeerLock 2
 PeerLock Installation 2
 PeerSync Interaction 10
 PLDef.cfg 10
 Product Editions 16
 Product Features by Edition 16
 Product Licensing 16
 Product Support 2

- R -

Register Software 3
 Register Software Screen 17
 Registration 17
 Release All Locks 3
 Release Frequency 10
 Release on Application Closing 10
 Release Options 3
 Remote Source Selections 3, 16

Reporting 9
 Reporting features 3
 Run as a Service 3, 16

- S -

Save Settings 8
 Save-N-Sync Interaction 10
 Select Log File Button 9
 Select Mask Button 3
 Select Source Button 3
 Select Target Button 3
 Selection 3
 Selection Count Status 3
 Selection Limits 3, 16
 Selection List 3
 Selection List Status Bar 3
 Service Options 3, 16
 Set Detection Method Level 10
 Set Number of Backup Files to x 9
 Set the Maximum Log File Size to x Bytes 9
 Shortcuts 10
 Source 3
 Source Column 3, 7
 Source Folder Selection Limits 3, 16
 Source Selections 3
 Start 3, 8
 Startup Folder 10
 Stop 3, 8
 Strip File Extension (Check For File Name In Caption) 10
 Strip File Path (Check For File Name In Caption) 10
 Sub-folders 3
 Sub-folders Column 3

- T -

Target 3
 Target Column 3, 7
 Target Folder Selection Limits 3, 16
 Target Selections 3
 Tool Bar 8
 Trigger Event 10

- U -

Update Selection Screen 3
Upgrade Information 2
Use Exclusive Lock 10

- V -

View Folder Selections 3, 16
View Log File 3
View Log File Button 9

- W -

Wait for Associated Application to Close 10